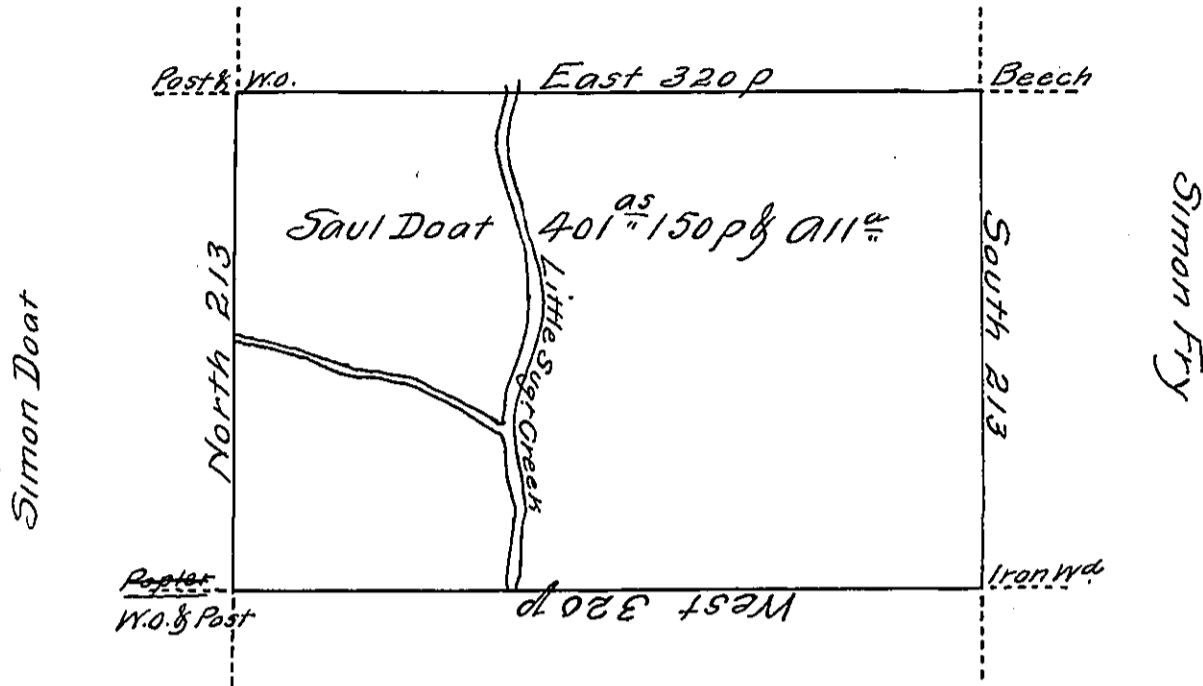


Joseph Hall



George Doat

Situate on the East Side of French Creek in Allegheny County
 Containing 401^a and 150 perches and Allowance of Six p Cent
 for Roads &c Surveyed the 17th day of June 1794. In pursuance of
 a Warrant dated the 10th day of April 1792

W^m Powers D. J. S^r

To Dan' Brodhead Esq^r }
 Surveyor General }

IN TESTIMONY that the above is a copy of the original remaining on file in
 the Department of Internal Affairs of Pennsylvania, made
 conformably to an Act of Assembly approved the 16th day of
 February, 1833, I have hereunto set my Hand and caused
 the Seal of said Department to be affixed at Harrisburg,
 this Twenty third day of March 1911

Henry Houck

Secretary of Internal Affairs.